



User manual

Safera Aurora Stove Guard



We sense what humans don't

Safera Aurora Stove Guard

User Manual

Congratulations for buying the Safera Aurora Stove Guard. This guide describes the use and maintenance of the product. Please read these instructions carefully before installing and using the system and keep them for future reference.

We wish you safe and enjoyable cooking!

Manufacturer

The product is designed and manufactured by Safera, a Finnish company of experts in cooking safety.



Safera Oy

Tekniikantie 4
02650 Espoo
Finland

Product support

support@safera.com

Contents

1. Introduction
2. Stove Guard Description
3. Using the Stove Guard
4. Maintenance
5. Troubleshooting
6. Specifications
7. CE Conformity
8. Warnings and Limitations of Liability
9. Safera's Warranty and License Terms and Conditions

1. Introduction

Follow these instructions carefully and pay particular attention to the instructions marked in the following way:

▲ WARNING

Follow instructions marked with a warning accurately to prevent injury to persons and damage to property.

📌 ATTENTION

Follow instructions marked with a note carefully to prevent damage to property.

💡 HINT

Hints give you useful hints on using the appliance.

1.1 Important Use and Service Information

▲ WARNING

This device is designed to EN 50615 Category B - prevention of fires originating from overheating of oil in pans and pots on a hob. This device may not be suitable for fires originating from flammable materials left in proximity of the hob or on the hob. This device may not be suitable for fires originating from oven.

The Stove Guard must be used for its intended purpose only, as described in chapter 2.1. Purpose of Use. Safera Oy is not liable for any damages caused by inappropriate use or installation of the appliance.

▲ WARNING

The Stove Guard does not replace statutory home fire alarms. Ensure that fire safety at your home follows the local regulations.

📌 ATTENTION

Only authorised Safera service personnel are allowed to service the safety system. Use only original Safera parts.

1.2 Battery safety information

▲ WARNING

Failure to follow the instructions below may cause the batteries to leak fluid and gas, or even explode.

- Do not expose batteries to excessive heat, insert them with wrong polarity, or try to recharge them.
- Always replace all batteries at once, using the same make, model and age for all batteries.
- Do not leave empty batteries inside the device for prolonged periods.
- Recycle the empty batteries properly, do not place in domestic waste.
- If the leaked fluid gets into your eyes, do not rub them, as there is a risk of losing eyesight. Rinse your eyes with water and contact a physician immediately.
- If the leaked fluid gets into your mouth, rinse with water and contact a physician immediately.
- If the leaked fluid gets on your skin or clothes, rinse with copious amounts of water to prevent burns.

2. Stove Guard Description

2.1 Purpose of Use

Safera Stove Guard is designed to improve the safety of domestic cooking (see compatibility in the Installation manual). It is highly effective at preventing cooking fires.

Always take care when using the cooker and keep children and pets away.

Please note that the appliance is designed to prevent cooking fires. In case of a fire, you must follow appropriate procedures to prevent further damage. If necessary, call Emergency Services, explain the situation calmly and follow the instructions given to you.

▲ WARNING

Flame cooking is prohibited under the cooker hood.

Safera Stove Guard is meant for household use only. The appliance must not be used in professional kitchens or with cookers and hobs meant for professional use.

2.2 Conformity

Safera's CE marking ensures that Safera Aurora conforms to the required EU requirements and standards. See chapter 7. CE Conformity.

2.3 Appliance Description

Safera Aurora can be mounted on the ceiling above the cooker, see the figure below and installation manual for further information.

- Ⓐ Sensor unit
- Ⓑ Mounting bracket
- Ⓒ Power control unit
- Ⓓ Remote control

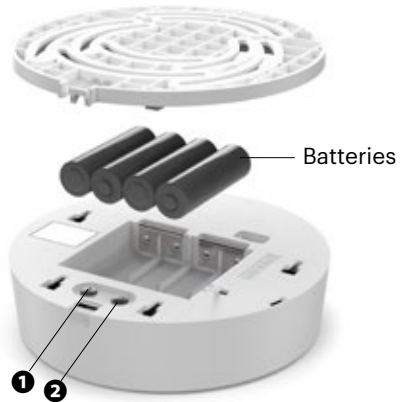
The Sensor unit Ⓐ and the power control unit Ⓒ are connected via a wireless Safera RobustLink connection, which is designed for safety-critical applications.



Sensor unit **A**

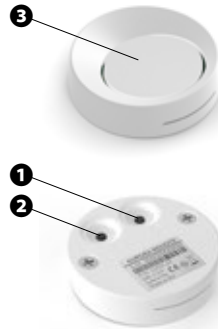


Mounting bracket **B**



- 1** Adjustment button 1
- 2** Adjustment button 2
- 3** OK-button
- 4** Indicator light
- 5** Mains voltage indicator (optional)
- 6** Sensors

Remote control **D**



HINT

The sensor unit and the remote control have identical button configurations so you may use either one to operate all functions of the stove guard.

2.4 Indicator light **4**

LED color	Sound	Function
Green	-	Cooker ready to use
Red blinking	Yes	Cooker danger
Red blinking slowly	Yes	Cooker power has been cut off
Yellow blinking very slowly	Yes	Low battery
Blue blinking slowly	Yes	Water leakage (optional)

3. Using the Stove Guard

Safera Stove Guard observes the temperature changes and the use of the cooker. The Stove Guard automatically gives an alarm and switches off the cooker and the oven in a hazardous situation based on temperature changes and also if

- the cooker is left on for over 3 hours without anyone using it,
- the cooker has been on for over 5 hours, or
- the oven has been on for over 12 hours without anyone using it.

3.1 Setting the Alarm Limit

To ensure safe and reliable operation, you need to set the alarm limit to match the location of the cooker in the kitchen. The alarm limit may also be adjusted in case of frequent false alarms. See Installation manual for further information.

WARNING

The Stove Guard controls the oven only if the oven is connected to the power control unit (C).

The cooker's hot-hob indicators do not work after the Stove Guard has switched off the cooker. The hob may still be hot.

ATTENTION

The Stove Guard is designed to avoid raising unnecessary alarms. This means that it allows the temperature to reach high levels during cooking without raising an alarm.

It does not sound an alarm until it looks like the situation may be dangerous.

3.2 Other safety features

For safety reasons, the stove guard will prevent the use of cooker and oven, if

- the sensor unit (A) is removed from its original installation position: place the sensor unit back on the mounting bracket (B)
- the batteries are empty: replace the batteries (see chapter 4.3)
- if the sensor unit is (A) faulty: see chapter 5. Troubleshooting. Until the fault is fixed, use of the cooker is possible for three hours by removing the batteries from the sensor unit (A) and the fuses from the cooker for 10 seconds.

3.3 Cooker danger

This is a warning that the cooker is dangerously hot, or when the cooker or oven is left on for too long. An alarm is sounded and the indicator light ❹ flashes red. The Stove Guard switches off the cooker and the oven in 15 seconds.

When you hear the alarm:

1. Check the situation calmly. If there is no danger, you can prevent the cooker power from being switched off by pressing the OK button ❸ during the alarm and continuing to cook.
2. If you do not press the OK button ❸ during the alarm, the Stove Guard will switch off the cooker and the oven: after switch off a repetitive signal is sounded and the indicator light ❹ blinks red for 15 minutes.
3. When there is no more danger, you can return the power to the cooker and oven by pressing the OK button ❸. First, turn the hob switches to the zero position.
4. Ensure that the hazardous situation will not reoccur.

HINT

If the case of frequent false alarms, you can raise the alarm limit, see 3.1. Setting the Alarm Limit.

3.4 Water Leakage Detector (optional)

Safera Stove Guard can be equipped with up to four water leakage sensors. When the sensors get wet for example because water drips on them, the detector will sound an alarm with far-spaced signals and indicator light ❹ blinks blue.

When you hear the water leakage alarm:

1. Reset the alarm by pressing the OK button ❸.
2. Before continuing, make sure the power supply for the cooker is turned off.
3. Find out what caused the alarm and take care of the water leakage.
4. Clean and dry the sensor ❸.

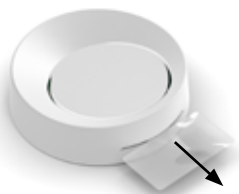
HINT

If the sensor is left wet, the appliance will give another alarm in 8 hours after signing off the previous one.

3.5 Remote control

You may use the Safera Aurora stove guard remotely with the remote control ①. The remote control has the same buttons as the sensor unit, see chapter 2.3. Appliance Description.

Activate the remote control by pulling off the battery slip, see figure below. The battery is designed to last 5-10 years in normal use.



HINT

You may attach the remote control with the magnetic back, for example to the door of a fridge.

3.5.1 Replacing the batteries of the remote control ①

1. Remove the screws on the backside of the remote control.
2. Replace the old battery with a new battery of type CR 2032 so that the positive (+) side is facing up.
3. Close the battery cover and secure it with the screws.



4. Maintenance

To ensure continued safe and reliable operation, please follow the instructions in this chapter.

4.1 Regular maintenance

Follow the maintenance instructions at least every three months or more frequently if needed.

4.1.1 Check the working order

1. Press the OK-button **3** for 3 seconds: the indicator light **4** starts blinking orange.
2. Place an empty pan on a cooking plate at maximum power.
3. Move at least two meters away from the cooker to avoid disturbing the test.
4. Wait two minutes or until the sensor unit **A** gives an audible signal and indicates the test result
 - Test was succeeded if the indicator light **4** blinks green and the cooker power has been switched off
 - Test was failed if the indicator light **4** blinks red and if the cooker power is switched off: the sensor unit **A** is not correctly installed. Check or reinstall the sensor unit
 - if the cooker power is not switched off, the power control unit **C** is not correctly installed: turn off the cooker and check or reinstall the power control unit **C**
5. Press the OK-button **3** to finish the test.

ATTENTION

Press the OK button **3** to start the self-diagnostics: when the stove guard is in working order, the indicator light **4** will blink in green.

4.1.2 Cleaning

Wipe the Sensor unit **A** with a cloth moistened with water or a mild detergent, such as washing up liquid, once a month. Avoid pressing the appliance buttons and sensors.

ATTENTION

Do not use coarse or abrasive materials to clean the sensor unit **A**.

4.1.3 Ensure clear sight for the sensor unit

Ensure that the sensor unit is able to see the entire cooktop. For example don't place any tall objects, such as cans or plants or downdraft cooker hood, next to the cooktop so that they are blocking the sight of the sensor unit.

WARNING

If the sensor unit cannot see the cooktop completely the stove guard is not able to react to cooking hazards on time.

4.2 Battery life and low battery

In normal use, the batteries should last 2-3 years.

The indicator light ④ starts blinking slowly yellow and the stove guard beeps when the battery has approximately two weeks of life remaining. Replace the batteries according to the following instructions.

You may reset the low battery alarm for 12 hours by pressing the OK button ③. If the batteries are not replaced in approximately two weeks, the stove guard switches off the cooker power. The indicator light ④ starts blinking red until the batteries are completely empty.

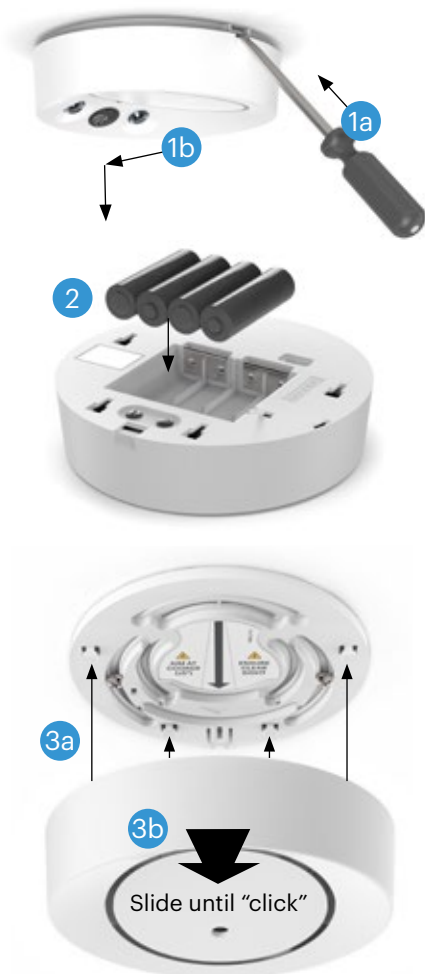
4.3 Battery replacement

1. Remove the sensor unit ① from the mounting bracket ② by first a) gently pushing the locking lever on the bracket with a screw driver positioned in 45° to the bracket and b) simultaneously pulling the sensor unit off the bracket. See the adjacent figure.
2. Replace new AA/LR6 Alkaline batteries in the sensor unit ①. Notice the correct position marked on the bottom of the battery case.
3. Place the sensor unit ① back onto the mounting bracket ② by a) guiding it to the four pins and b) then sliding it gently until it is locked.

ATTENTION

Check the correct position of the batteries marked on the bottom of the battery case.

Use only high quality alkaline batteries.



5. Troubleshooting

Press the OK button **3** to find out the problem type by the indicator light **4**:

Indicator light 4 blinks in blue:	Indicator light 4 blinks in yellow:	Indicator light 4 blinks in red:
Once: Problem with wireless connection. Twice: Problem with power control unit C . Three times: Power control unit C over-heating.	Once: Problem with sensors G . Twice: Problem with sensor unit A . Three times: Faulty installation position of the sensor unit A : see remedy on the table below.	Three times: Problem with mounting bracket B .

Cooker cannot be switched on.

See chapter 3.2. Other safety features. If the problem persists, press the OK button **3** to find out the problem type, see the table above.

Faulty installation position of the sensor unit **A.**

Sensor unit **A** will automatically recognize its installation position during the first time the cooker is used for cooking. After the auto-recognition is completed, the stove guard will prevent the use of cooker and oven if the sensor unit **A** is removed from its original installation position. To enable use of the cooker, place the sensor unit **A** back to the mounting bracket **B** and press the OK button **3**. If the problem persists, the auto-recognition might not have been successful. Ensure the correct position of the sensor unit **A** (see installation manual step 2/3) and manually reconnect the wireless connection according the installation manual chapter 4.2. Mode 2: Manual setup of the wireless connection. The fault should be then corrected automatically in two minutes.

Faulty or old mounting bracket **B**

Sensor unit **A** is not installed properly into mounting bracket **B** or mounting bracket is old model and it should be removed and changed the new one (included in package)

The appliance repeatedly gives false (the indicator light **4 blinks red and cooker power is switched off).**

Test the working order according to chapter 4. Maintenance. If the appliance is in working order, but the Stove Guard gives repeatedly false alarms, you may adjust the alarm limit of the appliance. See installation manual.

The appliance repeatedly gives false alarms, especially when the oven is in use.

There may have been a mistake in the calibration of the appliance. See installation manual.

The appliance repeatedly gives out water leakage alarms.

For instructions, see chapter 3.4. Water Leakage Detector (optional). If the alarms reoccur, take off the fuses for the cooker and the oven. Check that the leakage sensors are correctly connected. Put back the fuses.

Please contact your vendor support if you cannot solve your problem with these instructions.

6. Specifications

Sensor Unit	
Battery type	AA/LR6 Alkaline.
Battery life	2 - 3 years
Wireless connection	Safera RobustLink 2,4 GHz. Range 10 - 100 m, depending on the building structure
Pollution degree	2
Power Control Unit	
Compatibility	Most electric cookers and hobs used in private homes. See specific compatibility on the label of the power control unit ©.
Power supply	See the label of the power control unit ©.
Power consumption	2 W (PCU6.3 = 4 W)
Control type	IEC/EN 60730 - 1 : Type 1.B
Pollution degree	2
Impulse voltage rating	4 kV
Operational ambient temperature	See the label of the power control unit ©.
Ball pressure test rating	100 °C
PTI of insulation materials	175...400
Designed number of automatic actuations	6000
IP class	See power control unit

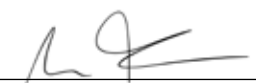
Remote control

Battery type	CR 2032
Battery life	5 - 10 years
Wireless connection	Infrared

7. CE Conformity

Safera Oy ensures that Aurora fulfills all compliant EU directives and standards:

EN 50615:2015 (Category B), Particular requirements for devices for fire prevention and suppression for electric hobs (cooktops), 2014/35/EU, 2014/30/EU, 2011/65/EU, 2012/19/EU, 1999/5/EC, 2014/53/EU, EN 60730-1:2011, EN 60335-1:2012, EN 60335-2-31:2012, EN 300 328 (V.1.8.1), EN 301 489-1: 2011 (V1.9.2), EN 301 489-17: 2009 (V2.1.1), ETSI EN 300 440-2 (V.1.4.1), EN 55014-1:2006 / CISPR 14-1, EN 55022:2010, EN 61000 -family, EN 50581:2012.



Espoo Finland 10.12.2019
Mikko Reinikainen, CEO

8. Warnings and Limitations of Liability

▲ WARNINGS

EVEN IF A SAFERA PRODUCT IS USED, THE END USER MUST ALWAYS USE THE COOKER, OVEN AND OTHER OBJECTS POSSIBLY SUPERVISED BY A SAFERA PRODUCT RESPONSIBLY AND SAFELY, AND THE END USER MUST CONSTANTLY SUPERVISE THEIR USE. A SAFERA PRODUCT IS NOT A SUBSTITUTE TO AND DOES NOT REPLACE THE FIRE ALARMS REQUIRED BY LAW AND DOES NOT NECESSARILY PREVENT FIRE OR PREVENT OR REDUCE ANY OTHER DAMAGE AND DOES NOT NECESSARILY GIVE AN ALARM OF ANY DAMAGE OR A RISK THEREOF. THE END USER MUST ALWAYS TAKE CARE OF FIRE SAFETY AS SET FORTH IN REGULATIONS. A SAFERA PRODUCT MUST BE USED ACCORDING TO ITS USER MANUAL.

▲ WARNINGS

THE SAFERA PRODUCTS DO NOT DIMINISH OR REMOVE THE END USER'S RESPONSIBILITY TO FOLLOW THE APPLICABLE REGULATIONS OR AUTHORITIES' ORDERS OR THE RESPONSIBILITY TO ACT WITH DUE CARE TO AVOID DAMAGE TO PROPERTY AND PERSONS. THE END USER IS RESPONSIBLE FOR MAINTAINING IN FORCE ITS INSURANCES FOR PROPERTY AND PERSONS. SAFERA SHALL NOT BE LIABLE FOR ANY DAMAGE TO PROPERTY OR PERSONS OR FOR ANY MONETARY OR FINANCIAL DAMAGES CAUSED BY THE FUNCTIONING OR NON-FUNCTIONING OF A

SAFERA PRODUCT, TO THE EXTENT THE MANDATORY LAW ALLOWS THIS KIND OF DISCLAIMER.

To the extent mandatory law does not prohibit the following provisions:

- (a) The Distributor's warranty and other terms govern the sole right of an end user to make claims based on defects in the Safera products, and such claims shall be made towards the Distributor;
- (b) Safera is not liable for loss of income or other indirect or any other damages that are difficult to predict;
- (c) Safera's liability, including price returns and reductions, is limited to the Safera product's purchase price, which has been paid to Safera for the respective Safera product.

9. Safera's Warranty and License Terms and Conditions

9.1 Applicability of the Warranty

Safera Oy ("Safera") gives to its new products ("Product") a limited manufacturer's warranty to end users of the Product in accordance with these Safera's Warranty and License Terms and Conditions. The warranty applies to the Defects (as defined in Section 6) covered by the warranty, which are notified to Safera during the warranty period. This limited warranty does not limit a consumer's right to claim the rights according to the mandatory applicable consumer protection legislation.

9.2 Start of the Warranty Period

The warranty period starts from the date of the first purchase of the Product. In case the Product has been installed ready to a new apartment, the date of the purchase shall be deemed to be the date of first purchase of the apartment. In case the Product is installed by the end user, the end user shall inspect the Product prior to the installation and without delay inform the seller of the Product about the defects or errors in the Product or its delivery.

9.3 Warranty Period

The warranty period shall be twenty-four (24) months.

9.3.1 Warranty to a Repaired Product

Warranty for a Product that has been repaired or replaced shall be the original warranty period of the Product which was repaired or replaced.

In addition, Safera gives to the spare parts used in the warranty repair of the Product an additional three (3) months warranty starting from handing over of the warranty repair. Otherwise warranty repair does not extend the original warranty period.

9.4 Work Included in the Warranty

Based on the warranty the Defects covered by the warranty will be repaired or the Product will be replaced (as Safera selects) without expense, provided that Safera was informed about the warranty claim during the warranty period. The repair or replacement will be made within a reasonable time during normal working hours in Safera's repair shop, in a repair shop authorized by Safera or in other place designated by Safera, such as in the premises where the Product is installed.

9.5 How to Act

For the warranty service, the end user shall contact primarily the seller of the Product. The end user may also contact Safera or a repair shop authorized by Safera. Information about the warranty service is in the Product's user manual or on Safera's website.

Safera, the seller of the Product or a repair shop authorized by Safera (de-

pending on with whom the end user is in contact) informs the end user of how and when the warranty repair will be performed. In case this has not been informed to the end user within a reasonable time, the Product shall be delivered to the nearest Safera's repair shop or a repair shop authorized by Safera.

The original parts which have been replaced under the warranty shall be Safera's property and shall be delivered to Safera.

9.6 Preconditions for Warranty Repair

Warranty is valid on condition that the Product has a defect attributable to material or manufacturing or it otherwise does not substantially conform to its written specifications ("Defect") and that:

- (a) the Defect has been noticed in usage conditions deemed normal and it can be reproduced in such conditions,
- (b) the instructions for installation, use and maintenance have been followed,
- (c) the Product has been maintained or repaired by using original spare parts and supplies,
- (d) the warranty claim is made by the owner of the Product or its representative,
- (e) the owner of the Product or its representative notifies the Defect during the warranty period and within a reasonable time after noticing it, and shall be responsible for the Product's condition until it has been handed over for repair. Upon the handing over Safera shall be given

a declaration about the Product's purchase date, order references, itemization of the Defect and description of the Product's usage conditions.

In the event it is noticed, that the Defect is not covered by the warranty, Safera has the right to charge for the work and the expenses caused by searching and location of the Defect or error according to Safera's valid price list. Safera has also the right to charge the end user for an agreed repair of the Defect or error not covered by the warranty.

For the avoidance of doubt it is stated, that marketing materials are not Product specifications.

9.7 Limitations of Warranty

The warranty does not cover:

- (a) repair of Defects, which are due to normal wear and tear, failures in installation, use or maintenance, faulty or deficient repair made by others than Safera or a repair shop authorized by Safera, usage conditions in contradiction with the instructions or choosing by end user of a Product that is not suitable for the use in the premises where the Product is used or is wrong size or capacity;
- (b) repair of Defects, in case the Product has been repaired or modified by others than Safera's repair shop or a repair shop authorized by Safera;
- (c) repair of a Defect caused by external factors, such as accident, fluctuation of electricity or air conditioning, lightning, fire or water;
- (d) use of the Product in combination

with any other product not accepted by Safera in the user manual or otherwise in written form, or usage in usage environment not accepted by Safera in the user manual or otherwise in written form.

9.8 Software License

The software included and/or embedded in the Products may be used only as integrated in the Products when using the Products in their designed use. The software may not be separated from the Product, or used separately from the Product or used in connection with the use of other products or as part of other products. The software may not be

- (a) copied or otherwise reproduced (possible reinstallation shall be performed by Safera or a repair shop authorized by Safera),
- (b) modified, disassembled, decompiled or reverse engineered or
- (c) delivered to third parties other than as part of the Product when assigning the Product's ownership.

The end user is granted only the right to use the software in accordance with this provision. Copyright and other intellectual property rights in and to the software shall belong to Safera.

9.9 Dispute Resolution

These terms shall be construed in accordance with the laws of Finland excluding its choice of law provisions and the UN Convention on Contracts for the International Sale of Goods.

To the extent the mandatory applicable legislation does not regulate otherwise,

all disputes arising out of these terms shall be finally settled under the Rules for Expedited Arbitration Board of Arbitration of the Central

Chamber of Commerce of Finland by one (1) arbitrator appointed by the said arbitration institute, in English language. The arbitration shall take place in Helsinki, Finland.

Notwithstanding the above, Safera shall be entitled to seek equitable and/or injunctive relief in court of law of end user's or Safera's domicile.