



# Specifications

## MODEL

PP62827 Aluminum Shower Panel System with Rainfall Showerhead , Body Sprays and Handheld Showerhead.

## FEATURES

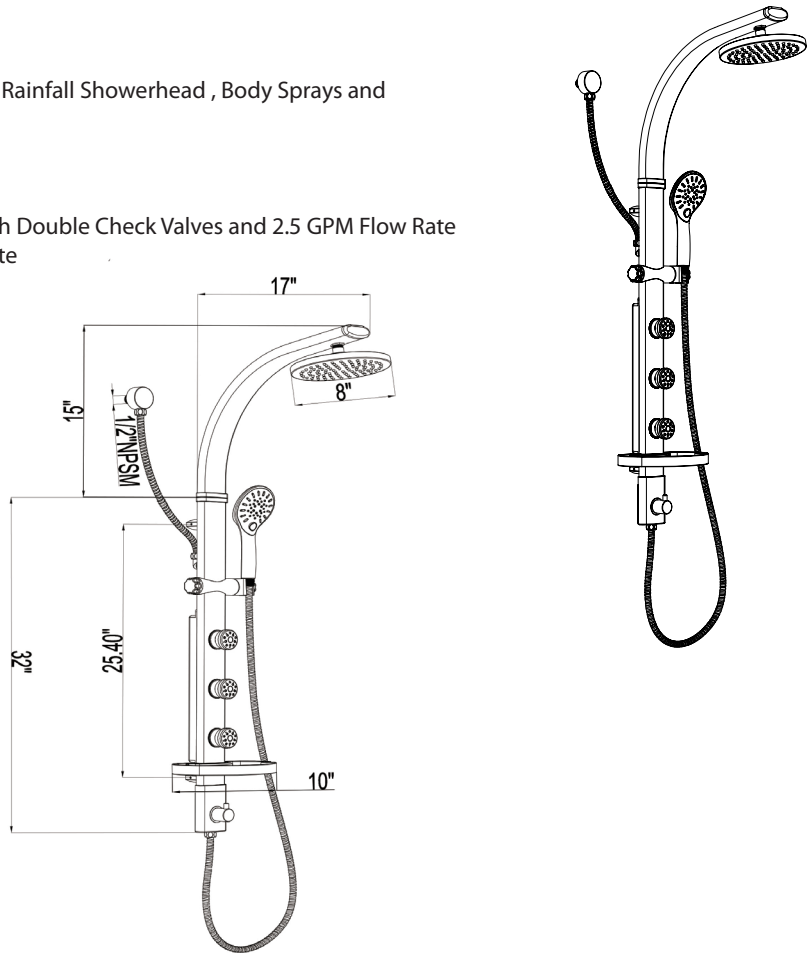
- 3 Settings Chrome Handheld Showerhead with Double Check Valves and 2.5 GPM Flow Rate
- 8" Chrome Rain Shower with 2.5 GPM Flow Rate
- 3 Chrome Body Sprays
- Anodized Aluminum Shower System
- 69" Stainless Steel Hose

## CODE COMPLIANCE

- ASME A112.18.1 / CSA B125.1
- IAPMO Certified

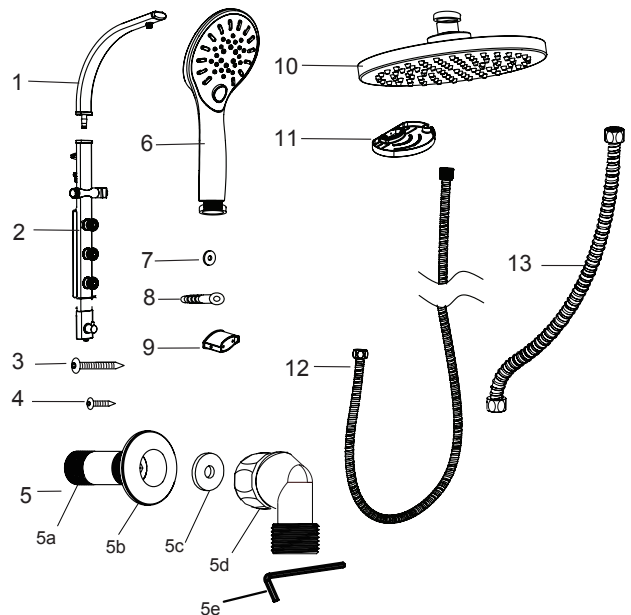
## WARRANTY

- One Year Limited Warranty



## INSTALLATION DIMENSIONS

| PART | DESCRIPTION                                    | QTY. |
|------|--|------|
| 1    | Upper arm                                      | 1    |
| 2    | Shower panel                                   | 1    |
| 3    | Anchor screw                                   | 4    |
| 4    | Wall bracket w/set screws                      | 4    |
| 5    | Wall elbow                                     | 1    |
| 5a   | E1: 1/2" NPT x 2" / 1/2" NPT x 2"              | 1    |
| 5b   | E2: Escutcheon                                 | 1    |
| 5c   | E3: Rubber gasket                              | 1    |
| 5d   | E4: Elbow                                      | 1    |
| 5e   | E5: Hex wrench                                 | 1    |
| 6    | Hand shower                                    | 1    |
| 7    | Rubber gaskets                                 | 4    |
| 8    | Wall anchors ( 5/16 in. Dia. x 1-1/2 in. long) | 4    |
| 9    | Wall brackets                                  | 2    |
| 10   | Rain can                                       | 1    |
| 11   | Soap tray                                      | 1    |
| 12   | Shower hose (69 in.)                           | 1    |
| 13   | Intake hose (25 in.)                           | 1    |



Jacuzzi Inc. reserves the right to make changes in specifications and materials and to change and discontinue models, both without notice or obligation. Dimensions are for reference only.