

# Bellavista 6642 Pure Air Bath



Product Codes beginning with: BEL6642ACR

Also applies to products sold under part numbers: LE10, LE30

## TECHNICAL SPECIFICATIONS

	English	Metric
Outer Dimensions	66" L x 42" W x 26" H	1676 mm L x 1067 mm W x 660 mm H
Interior Dimensions (bottom of bath) L x W (Mid) x W (End)	47" L x 25" W x 25" W	1194 mm L x 635 mm W x 635 mm W
Drain/Blower Configuration	Center drain/Right end blower	Center drain/Right end blower
Bath Weight (empty)	133 lbs	60 kg
Total Weight/Floor Loading	1116 lbs 58 lbs/ft <sup>2</sup>	507 kg 283 kg/m <sup>2</sup>
Operating Gallonage (min-max)	43 (min) 88 (max) U.S. Gals	163 (min) 333 (max) L
Electrical Specifications	<b>Each component requires a separate, dedicated GCFI protected circuit(s)</b>	
Blower		120V 15A 60HZ
Chromatherapy (if selected)		120V 15A 60HZ

## FEATURES, UPGRADES & ACCESSORIES

**Material Type:** High-Gloss Acrylic

**Install Type:** Drop-in

**Available Colors:** White (W), Almond (A), Oyster (Y), Black (B)

**Cut-out Template:** P187000

**Standard (Included) Features:**

Chromatherapy lighting, 800w blower, bottom and side air channels

**Available Control Systems:**

J4 Luxury Control Panel (standard)

J5 Luxury LCD Control Panel

**Available Upgrades:**

900w blower (with J5 LCD Control Panel)

**Available Accessories:**

DA34 Rotary Drain Kit PVC (specify metal finish)

HP55 Rotary Drain Kit (specify metal finish)

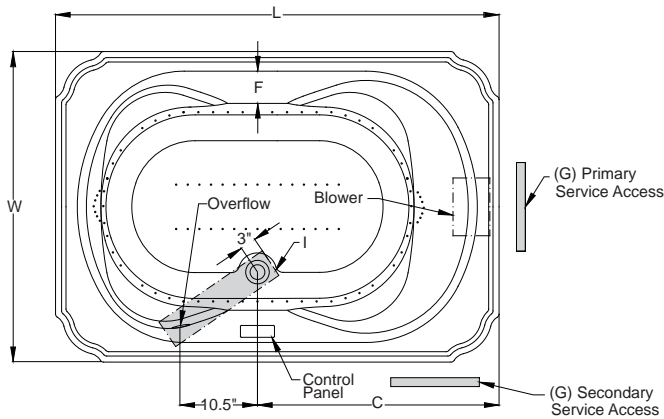
G864 Hand Rails (specify metal finish)

827: Chrome, 826: Brushed Nickel, 845: Oil Rubbed Bronze

C263 Curved Pillow (specify color) 959: White, 958: Almond, 969: Oyster

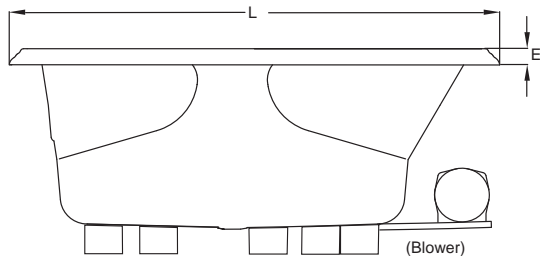
GQ88 Light Chromatherapy Add-on Kit

## KEY DIMENSIONS



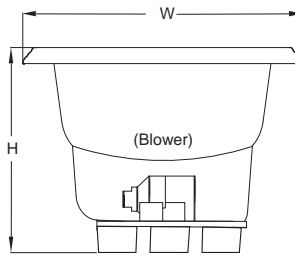
\*Deck width reflects only area indicated on detail.

Letter	Description	English	Metric
L	Outer Length	66"	1676 mm
W	Outer Width	42"	1067 mm
H	Overall Height	26"	660 mm
A	Overflow Height	20"	504 mm
B	Long Edge to Drain Center	11 3/4"	298 mm
C	Short Edge to Drain Center	35 1/2"	902 mm
D	Drain Shoe Length	6"	152 mm
E	Deck Height	2"	51 mm
F	Deck Width*	3"	76 mm
G	Service Access Dimensions	12" H x 18" L	305 mm x 457 mm
I	Floor Cut-out for Drain	17" x 4"	432 mm x 102 mm

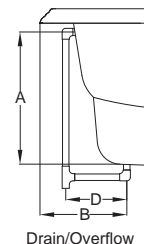


Side View

NOTE: Graphics May Not be to Scale



End View



Drain/Overflow