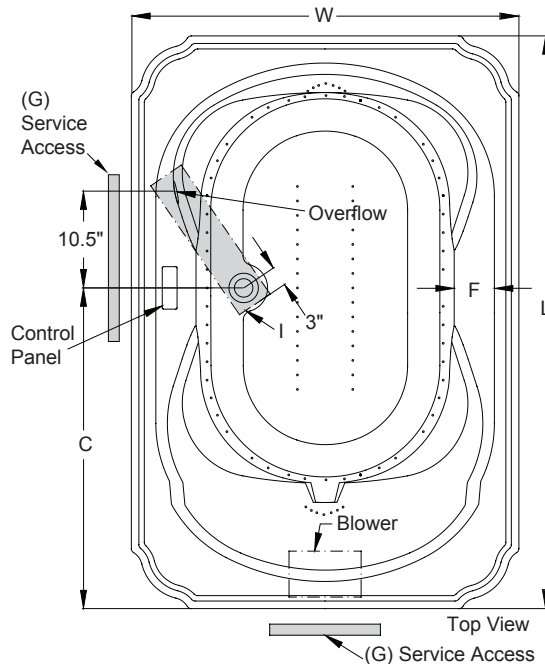
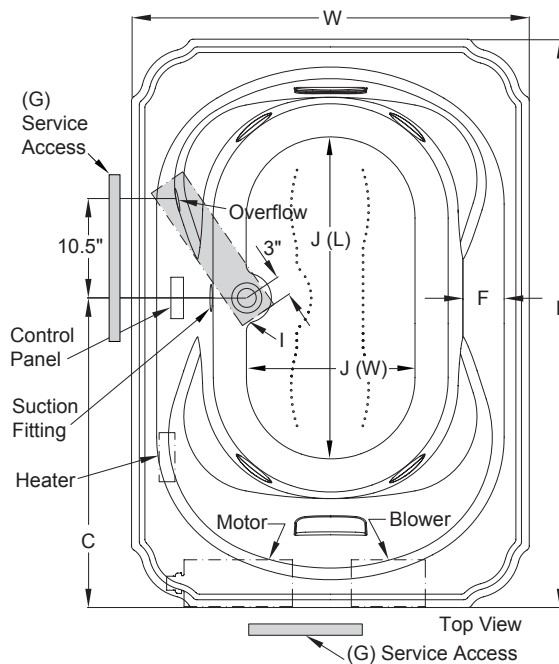


Marineo™ - Technical Specifications for 6642 Models

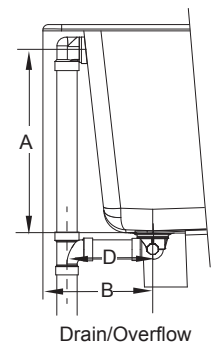
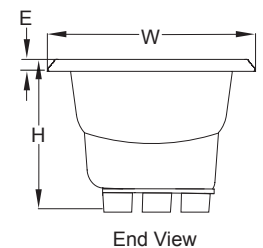
Letter	Description	SOAKING	PURE AIR® BATH	WHIRLPOOL	SALON® SPA	Each component requires a separate, dedicated GFCI protected circuit	
-	Drain/Motor Location	Center Drain/Right Side Motor And/Or Blower					
-	Cutout Template	Template Provided P/N P187000					
-	Total Weight	1068 lbs (484 kg)	1116 lbs (506 kg)	1113 lbs (505 kg)	1171 lbs (531 kg)		
-	Floor Loading	55 lb/ft ² (271 kg/m ²)	58 lb/ft ² (283 kg/m ²)	58 lb/ft ² (282 kg/m ²)	61 lb/ft ² (297 kg/m ²)		
-	Operating Gallons (Max)	88 gallons (333.1 liters)					
-	Product Weight	85 lbs (39 kg)	133 lbs (60 kg)	130 lbs (59 kg)	188 lbs (85 kg)		
-	Soaking Depth	17.5" (444.5 mm)					
L	Outer Length	66" (1676 mm)					
W	Outer Width	42" (1067 mm)					
H	Overall Height	26" (660 mm)					
A	Overflow Height	18.75" (476 mm)					
B	Long Edge to Drain Center	11.75" (298 mm)					
C	Short Edge to Drain Center	35.7" (907 mm)					
D	Drain Shoe Length	6" (152 mm)					
E	Deck Height	2" (51 mm)					
F	Deck Width	3" (76 mm)					
G	Service Access Dimensions	12" x 18" (305 mm x 457 mm)					
I	Floor Cutout for Drain	12" x 6" (305 mm x 152 mm)					
J	Interior Dimensions (bottom of bath) L x W	47" x 25" (1194 mm x 635 mm)					

Model with components		GFCI Outlet (60Hz)
SOAKING	Soaker only	None
	Soaker w/ Chromatherapy	120V 15A
PURE AIR® BATH	Blower	
	Chromatherapy (if available)	
WHIRLPOOL	Motor/Pump	120V 20A
	Heater (if available)	120V 15A
SALON® SPA	Motor/Pump/ Heater	240V 20A
	Blower	120V 15A

KEY DIMENSIONS* [NOTE: The overall dimensions are nominal with a tolerance of +0 and -.25" (6mm).]

 Marineo™ Soaking And Pure Air® Bath Models
 (Pure Air® Bath Shown)

 Marineo™ Whirlpool And Salon® Spa Models
 (Salon® Spa Shown)


All Models



Refer to installation instructions included with fixture before beginning installation. Please confirm product availability and specifications before commencing with any installation work.

PRODUCT SPECIFICATIONS AND AVAILABILITY ARE SUBJECT TO CHANGE WITHOUT NOTICE