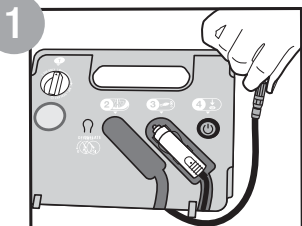
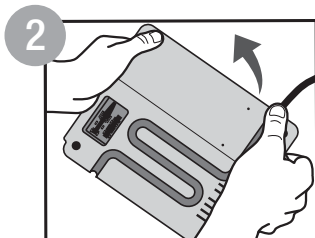


TRUCK FLAT TIRE REPAIR KIT SEALANT INSTRUCTIONS

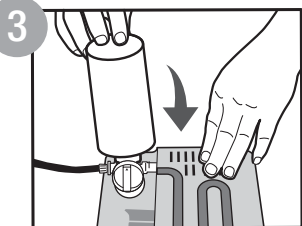
CARTRIDGE REMOVAL



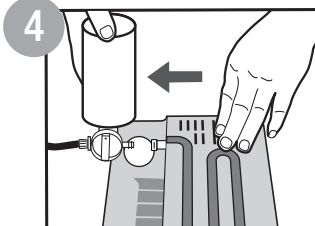
Unwrap air/sealant hose.



Lift cartridge cover.

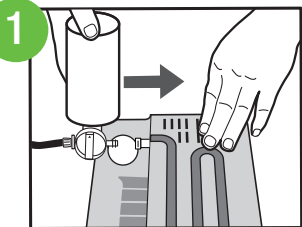


Rotate cartridge to upright position.

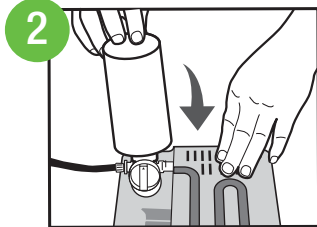


Pull cartridge out horizontally.

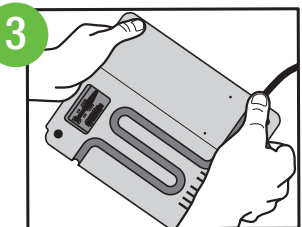
CARTRIDGE INSTALLATION



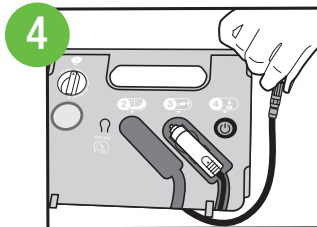
Slide in sealant refill cartridge in upright position.



Rotate cartridge into down position.



Press on cover to close.



Wrap air/sealant hose for storage.