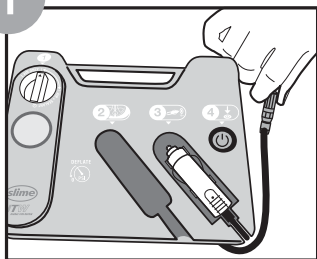


# CARTRIDGE REMOVAL

## CÓMO RETIRAR EL CARTUCHO

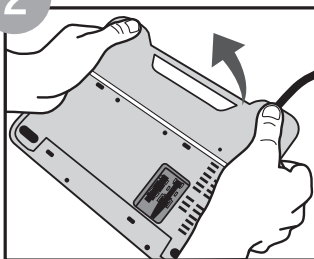
1



Unwrap air/sealant hose.

Desenrolle la manguera de aire/sellador.

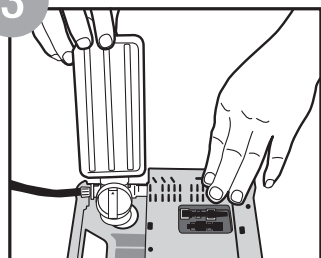
2



Lift cartridge cover.

Levante la tapa del cartucho.

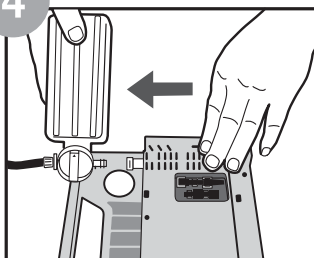
3



Rotate cartridge to upright position.

Gire el cartucho hasta que quede en posición vertical.

4



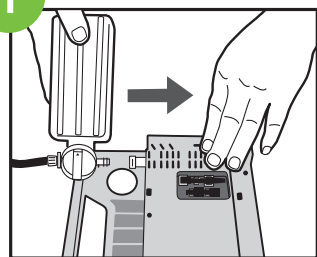
Pull cartridge out horizontally.

Tire del cartucho en dirección horizontal.

# CARTRIDGE INSTALLATION

## CÓMO INSALAR EL CARTUCHO

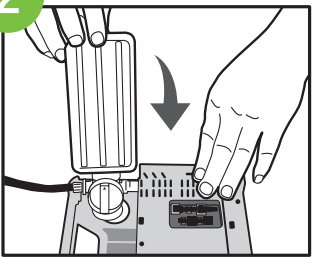
1



Slide in sealant refill cartridge in upright position.

Deslice el cartucho de repuesto en posición vertical.

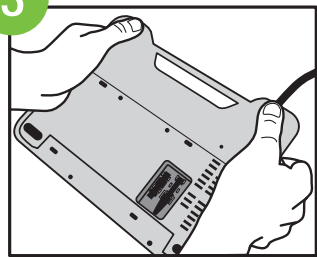
2



Rotate cartridge into down position.

Gire el cartucho hasta que quede en la posición hacia abajo.

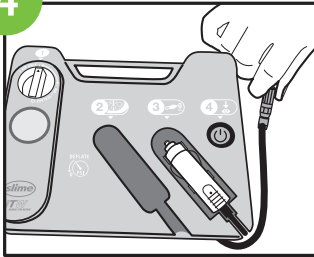
3



Press on cover to close.

Oprima la tapa para cerrarla.

4



Wrap air/sealant hose for storage.

Enrolle la manguera de aire/sellador para almacenarla.